

METHOD STATEMENT

Page 1

TARKETT – AQUARELLE HFS, WALLGARD 1.30MM VERTICAL AND 'T' METHOD

January 2016

The preparation/dryness of the wall / subfloor and installation procedures should all be as BS 476. i.e.: The relative humidity of the wall must be below 75%RH when tested with a hygrometer. The walls should be smooth, dry, clean, sound and Old paint must be completely sanded.

Recent studies have shown that micro-organisms can colonise, under certain conditions, the area between the sub-base (wooden, plaster or cement) and the installed PVC product. These micro-organisms can thrive in warm, damp conditions where there is sufficient 'food' available – for example, certain types of compound used prior to the PVC installation. During their normal life-cycle, these micro-organisms produce a colorant, usually pink, purple, red or black (but can be other colours), which can 'bleed' through to the surface of the PVC product over a period of several months or longer.

Advice should always be sought from the manufacturers of sub-base preparations and adhesives prior to installation, to ensure that their products are suitable for the environment in which the PVC product to be installed – this advice may include using products that contain biocides or of specific resin types.

For wooden fabricated underlay e.g. plywood, care must be taken to store the material in an area where it will not become damp or contaminated.

The 'bleed' through of colorant created by micro-biological activity below PVC products is not attributable to a product/manufacturing fault.

Prepare the substrate as necessary prior to installation. All sheet plasterboard/ plywood boards etc should be fixed solidly and all fixing holes filled and joints taped and filled with appropriate moisture resistant filler. Priming the wall will seal a porous the substrate and increase the open time of the adhesive.

Although Tarkett may on occasion list a choice of adhesive, preparation compound and membrane manufacturers and types, we do not however guarantee the products listed (except Tarkett Embond) or suggest that the list of products or manufactures, are complete or current. Tarkett would not accept any liability (except for Tarkett Embond 170) for any of these products failing to perform in conjunction with any of their products. It is the responsibility of the adhesive, preparation compound and membrane manufacturer and the flooring contractor to ensure the products being used are appropriate for use and applied in accordance with the manufacturers recommendations.

The area of installation should be kept at a constant temperature of 18°C and above with a maximum of 27°C. Failure to follow these guidelines can result in the wall covering de-bonding, joints opening, all which can occur within a long or short period of time.

CONDITIONING

It is important that the material (rolls) is stored in an upright position. 24 hours prior to use, the material should be cut to the desired lengths and acclimatised within the area to be installed by laying flat on a prepared, clean subfloor at a temperature of 18° - 27°C. This temperature should be maintained throughout the duration of the installation. The minimum temperature of the wall substrate should be 15°C. Care should be taken when handling all types of floorcoverings to ensure that safety procedures are followed and damage does not occur to the material

NOTE

If a standard adhesive is used and temperatures are at a constant above 27°C then the material may de-bond from the sub-base causing installation failure, and discolour over time.

METHOD STATEMENT

Page 2

TARKETT – AQUARELLE HFS, WALLGARD 1.30MM VERTICAL AND 'T' METHOD

January 2016

INSTALLATION

1. Allocate only material from the same manufactured batch for the same continuous area. Reverse alternate sheets to the previously installed sheet to prevent any likelihood of shading.
2. **Do not** join the edge of a full width sheet to the edge of a piece that has been cut e.g. a 2m full width to a piece cut 1m wide, always place the edge of the sheet to the edge of the sheet (taking into consideration that a very small overlap and cut through may be required on some occasions).
3. Pre-cut sheets approximately 10cm longer than the distance between floor and ceiling and lay flat. If required, place a straightedge along the one of the factory edges and trim to ensure a good edge is achieved. Place a cross check pencil mark half way down the length of the sheet at the edge of the good edge.
4. Measure the area to be installed by measuring around the room in multiples of the 2m widths to identify the location of each sheet join. Identify the exact location of the edge of the first sheet by placing a plumb line on the wall and drawing a pencil line down the wall where the first sheet will be placed and a 90° cross check pencil mark to represent the centre point between floor and ceiling.
5. Ensure that sheet joins do not coincide with the internal or external corners, as the Aquarelle/Wallgard is to be wrapped around these 2 details without incurring a joint. All sheet joins should be a minimum distance of 20cm away from any internal or external corner.
6. It is always best to allocate 2 installers to each area, especially in larger areas.
7. Apply a 100mm band of solvent free contact adhesive, to the top edge of the wall and to the top edge of the reverse of the vinyl (seek advice as to whether this is necessary from Tarkett Ltd).
8. Apply Tarkett Embond 170 adhesive (below the contact adhesive). **If the wall temperature is expected to exceed 27°C the Tarkett Embond 170 should be substituted for a suitable high temperature adhesive and the relevant manufacturers installation instructions should be followed (in this case disregard points 9, 10 and 11).**
9. **Embond 170 (pressure sensitive adhesives) should be applied using a lambs wool roller, which should be continually re-saturated in adhesive directly from the adhesive tub to prevent the adhesive from being poorly dispersed over the wall. Apply sufficient adhesive to accommodate one sheet at a time.** Commence applying the adhesive from the starting point to 2cm from the opposite edge of where the sheet finishes.
10. Re-roll the Aquarelle/Wallgard with the face in across its width, with the good edge outermost.
11. **Allow the adhesive to become slightly opaque and slightly tacky.**
12. Carefully place the good edge of the Aquarelle/Wallgard onto the vertical pencil line and match cross check marks on wall and material and unroll into adhesive. Smooth out the surface **with a rubbing board and then roll in both directions with a wall roller**, commencing from the centre and working towards the edges, paying close attention to the seams.
13. Now place a straightedge on the opposite side of the sheet and cut a good edge and if necessary apply adhesive to the underside of the cut edge.
14. Repeat process as above, overlapping consecutive sheets onto the previous one by 2cm reversing the direction of the sheet. Roll with the wall roller.

METHOD STATEMENT

Page 3

TARKETT – AQUARELLE HFS, WALLGARD 1.30MM VERTICAL AND 'T' METHOD

January 2016

Internal Corners

1. Measure 1.98m from the edge of the last installed sheet to and around the internal / external corner of wall. Apply adhesive to the wall as before and allow to become tacky.
2. Prepare and place the material onto the wall in the same manner as before, working towards the corner.
3. Continue with any of the following alternatives
 - a) Gently heat the material and make sure that it has a good contact with the adhesive by pressing it firmly into the adhesive whilst working towards the corner. Use the Tarkett Corner Roller (1258010) to form the material in a sharp right angle into the corner and reheat.
 - b) Gently heat the material and make sure that it has a good contact with the adhesive by pressing it firmly into the adhesive whilst working towards the corner. Fold the sheet material in a sharp angle, back on itself face to face, approximately 1.3mm from the internal corner. Using the Tarkett Corner Roller to create a permanent fold. At this stage, ensure that the material to be continued does not come into contact with the adhesive on the adjoining wall. Finally press the folded sheet into the corner.
 - c) The sheet can also be pre-folded before applying the adhesive, by accurately measuring the distance to corner from vertical pencil line or the last installed sheet.
 - b) Now unroll the remainder of material around the adjacent wall towards the seam area and roll with a wall roller. Overlap material at seam, and roll with sectional wall roller.

Outside Corners

1. Measure 1.98m from the edge of the last installed sheet to and around the external corner of wall. Apply adhesive to the wall as before and allow to become tacky.
2. Identify the area on the reverse of the material that represents 15cm on either side of the corner and draw faint pencil marks.
3. Apply the adhesive to the area identified (30cm) with a brush or lambs-wool roller and allow to almost dry.
4. Apply the adhesive to remaining area of wall with the lambs-wool and then position the sheet. Gently heat and form the Aquarelle/Wallgard around the corner, whilst at the same time pressed it firmly into the adhesive using the Tarkett Hockey Stick (1258003).

Cutting Seams

1. All seams are to be overlapped and cut with a short scribe (over & unders). Set scribes to produce a 0.5mm gap. Remove off cut material and roll with a seam roller. Seams are to be cut and rolled immediately after placing the Wallgard/Aquarelle.

Grooving and Heat Welding Seams (If Installed Vertically)

1. Allow a lapse of 24 hours after adhesion prior to heat welding seams.
2. All seams are to be grooved using the Seam Groover.
3. All seams are to be welded using Tarkett Speed Welding Nozzle (1258012).
4. Prior to attempting to heat weld the Aquarelle/Wallgard seams, practice the welding process on a scrap piece of Aquarelle/Wallgard to achieve the optimal temperature setting and speed.

METHOD STATEMENT

Page 4

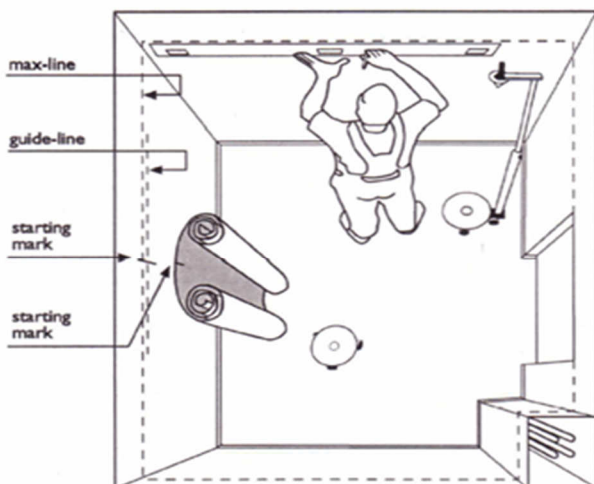
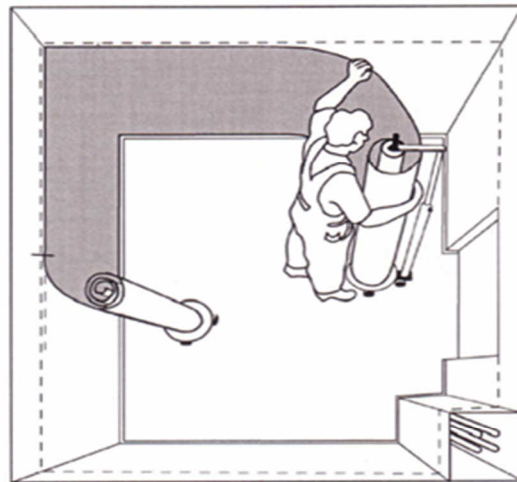
TARKETT – AQUARELLE HFS, WALLGARD 1.30MM VERTICAL AND 'T' METHOD

January 2016

Installation Instructions for applying wall coverings and borders in accordance with the Tarkett method, the T-method.

The Tarkett Wallguard Trolley is of great assistance when using the T-method to apply wall coverings.

1. Check for any rake on walls and corners. Draw a horizontal line (max-line) 207 cm above the finished floor level. This is the maximum height to allow an overlap of 3 cm on the flooring.
2. Measure the circumference of the room and make a mark half way along the max-line or at another suitable starting point (depending on pipes, external corners, etc).
3. Cut the sheet and roll it with the back facing outwards (if the Tarkett Wallguard Trolley is used, the sheet is rolled onto plastic tubing) and make a corresponding starting mark on the back of the sheet.
4. Roll up the rest of the cut sheet (poss. on plastic tubing) up to the mark so that two joining "rolls" are obtained.
5. Draw a new horizontal line, approximately 1 m long (the starting point guide-line) where the wall covering is to be initially applied at a height of 200-207 cm, depending on the rake of the corners, etc. Remember, corners that rake outwards will create a shortage of material at the bottom after the turn.
6. Apply adhesive to the surface of the wall up to the first max-line. The wall covering should be applied during the wet tack stage. It will take longer for adhesive to tack when substrates are non-absorbent. If you are unsure, you should not cover such large areas with adhesive.
7. Position the rolls on the trolley so that the markings on the rolls and the markings on the walls are aligned. Apply the rolls one at a time. Alternatively, the rolls can be applied standing directly on the floor (when the Tarkett Wallguard Trolley is not used).
8. Trim the wall covering's overlap to the floor covering before the adhesive has dried.



The border

9. Make a mark on the wall covering which indicates where the bottom of the border finishes. Allow a 3 cm overlap. Always proceed from the max-line.
10. Fill along the top edge of the wall covering with a water-resistant filler or use a pre-fabricated diminishing profile.
11. Measure the border and cut it to the right length (and width if applicable). Roll it onto a suitable length of plastic tubing.
12. Apply adhesive to the area where the border is to be located. Be very careful to ensure that the adhesive goes all the way down to the markings at the overlap.

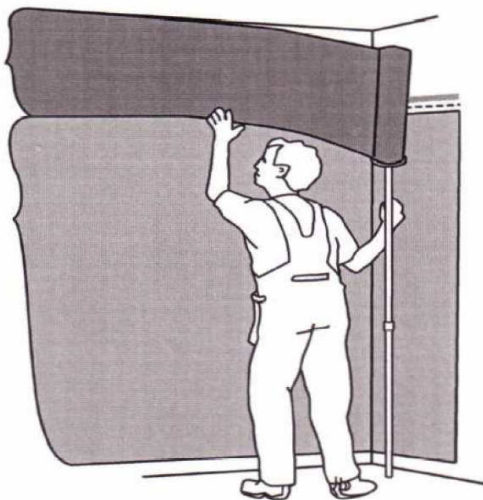
METHOD STATEMENT

Page 5

TARKETT – AQUARELLE HFS, WALLGARD 1.30MM VERTICAL AND 'T' METHOD

January 2016

13. The border is applied following the markings. Use the accessories on the Tarkett Wallguard Trolley to make it easier to handle the border. Preferably begin in a corner in the dry part. Check regularly for excess wetting between the border and the wall covering. Continue the border at least 2 cm on the other wall and finish there. Alternatively the border can be joined over the door.



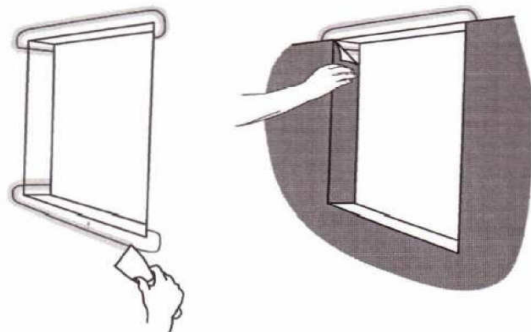
14. Be extra careful when washing off residues of adhesive at the border's overlap. Use clean water and a detergent suitable for removing adhesive.

For the best results:

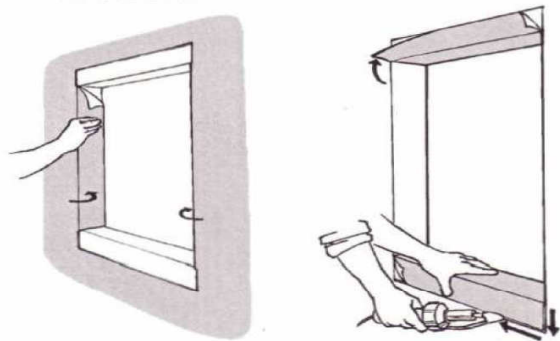
- Make sure all specifications and instructions are followed carefully.
- Use only adhesives recommended by Tarkett and adhesive manufacturers.
- Use Tarkett Speed Welding Nozzle.
- Check the installation afterwards.
- Contact your Tarkett representative if unsure about any part of the installation.

Windows

- 15 a. At window-recesses apply loose pieces first in the top and bottom recesses then fill the edges. The wall covering is rolled out over the window area and is then folded into the reveal. The overlap to the bottom recess should be sealed.



- 15 b. At window-recesses the wall covering is rolled out over the window area and is then folded into the reveals. Loose pieces are inserted at the bottom recess, and at the top recess where necessary. The loose pieces are joined to the wall covering with welded seams.



16. Finish by checking that there are no areas of ineffective adhesive, bubbles or adhesive residues.

Order No. 1258027 Tarkett Seam Grooving Tool
Order No. 1258011 Tarkett Trimming Knife
Order No. 1258010 Tarkett Corner Roller
Order No. 1258012 Tarkett Speed Weld Nozzle